



One Welfare for resilience of livestock production systems

ARGENTINA, CHILE, COLOMBIA, REINO UNIDO

Webstory



Technological solution

Contribute to the resilience of livestock systems, with a focus on "One Welfare", by implementing good livestock practices for cattle and sheep based on the principles of animal well-being.



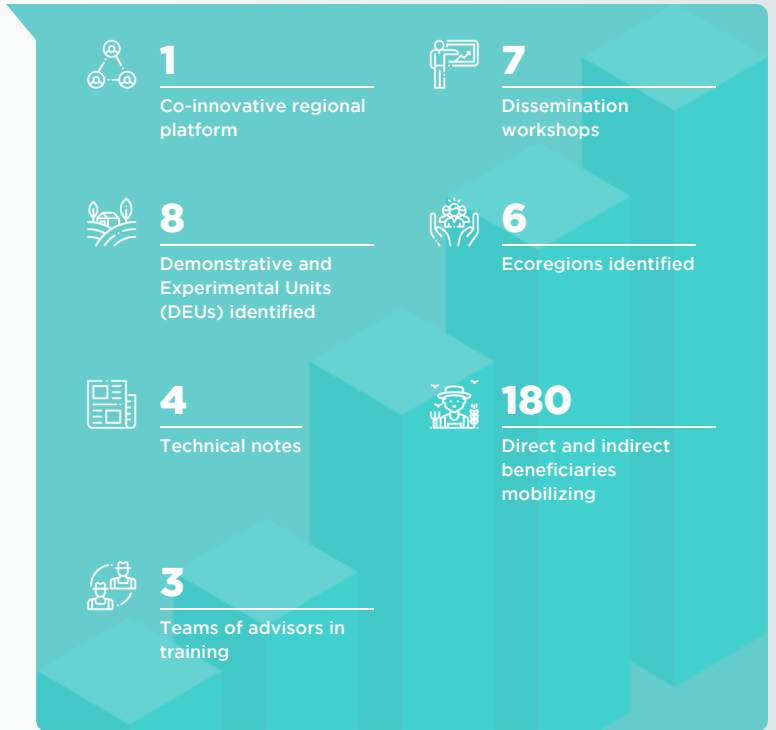
Technological description

The regional co-innovation platform made it possible to identify and prioritize Good Livestock Practices with a focus on Animal Welfare (GLP-AW) through a co-participatory methodology based on intercultural social technology, linked to local production indicators. In Argentina, cattle producers in the northeast prioritized the strategic use of forage, calf welfare, herd management, and health treatments, while in Patagonia, Mapuche communities prioritized improvements in identification marking, shearing, and reproductive management. In Colombia, key practices included pre-calving shearing, hoof health, and parasite control in the highlands, and heat stress management, pain control, and silvopastoral systems in the plains. In Chile, a participatory assessment defined a roadmap to address challenges in dairy farming and the welfare of working oxen, integrating these into the One Welfare approach and the SDGs.



Impacts and results

In the first year, the commitment of the co-executing agencies and partners to establish a baseline on practices and technologies related to animal welfare in cattle and sheep was reaffirmed. Outreach events and seven co-participatory workshops were held with 188 local actors, generating a report and four technical notes with preliminary results. In Argentina, the "One Welfare" approach was promoted in family livestock farming with territorial identity. In Chile, priorities were defined in the dairy sector, integrating animal welfare into key processes. In Colombia, practices were identified and action plans were initiated on pilot farms, articulating technical and traditional knowledge. The initiative strengthened local networks, identified at least eight demonstration units, and promoted tools and learning to advance toward more resilient, sustainable, and inclusive livestock systems



MAIN DONORS

PARTICIPATING ORGANIZATIONS

