



One Welfare for resilience of livestock production systems

ARGENTINA, CHILE, COLOMBIA, REINO UNIDO

i Webstory



Technological solution

A regional methodology for implementing and monitoring Good Livestock Practices with a focus on animal welfare, developed under the “One Welfare” approach and validated through participatory engagement with producers in Argentina, Chile, and Colombia. The solution integrates animal welfare indicators, environmental and socioeconomic variables, digital data collection tools, and training processes, thereby improving decision-making and strengthening the resilience and sustainability of livestock systems.



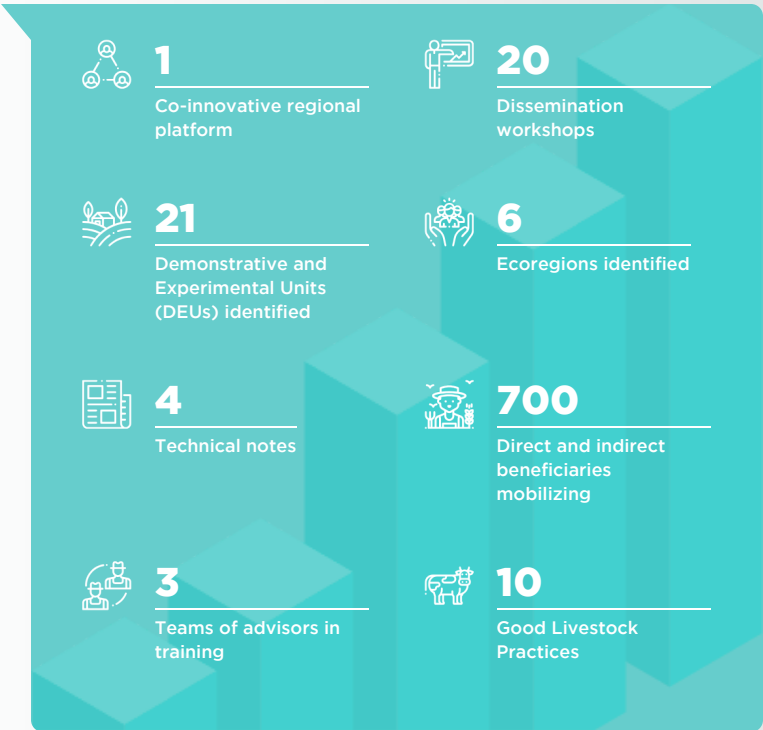
Technological description

The regional co-innovation platform made it possible to identify and prioritize Good Livestock Practices with a focus on Animal Welfare (GLP-AW) through a co-participatory methodology based on intercultural social technology, linked to local production indicators. In Argentina, cattle producers in the northeast prioritized the strategic use of forage, calf welfare, herd management, and health treatments, while in Patagonia, Mapuche communities prioritized improvements in identification marking, shearing, and reproductive management. In Colombia, key practices included pre-calving shearing, hoof health, and parasite control in the highlands, and heat stress management, pain control, and silvopastoral systems in the plains. In Chile, a participatory assessment defined a roadmap to address challenges in dairy farming and the welfare of working oxen, integrating these into the One Welfare approach and the SDGs.



Impacts and results

During its first two years, the project established a regional co-innovation platform involving producers, technicians, researchers, and institutions from Argentina, Chile, and Colombia to promote Good Livestock Practices with an Animal Welfare Approach (GLPs-AW) under the One Welfare framework. Through participatory processes in six ecoregions, ten priority practices were identified, and a regional monitoring methodology was developed. More than 200 stakeholders were trained through workshops, courses, and seminars, creating a network of implementers to support innovation processes. Additionally, 21 pilot sites were established across the three countries to conduct baseline assessments and participatory monitoring. These advances have strengthened regional collaboration, built local capacities, and laid the foundations for more resilient and sustainable livestock systems in Latin America.



MAIN DONORS

PARTICIPATING ORGANIZATIONS

